

Project reference: QAH Hospital, Portsmouth



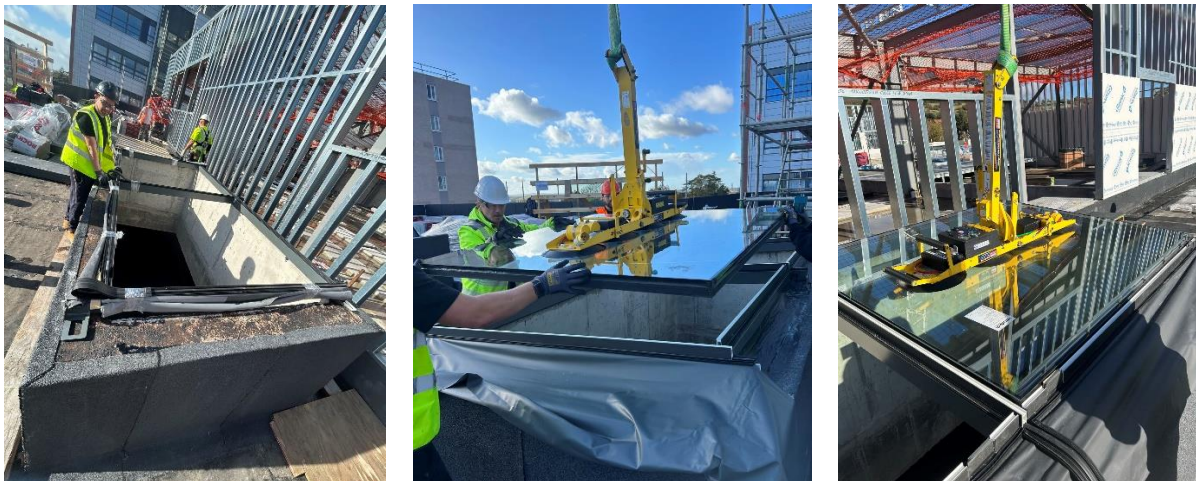
Main Contractor: **Vinci Construction**

**Products:**

LAMILUX Fire Rated Glass Roof REI 60– [Product webpage](#)

LAMILUX Glass Roof PR60– [Product webpage](#)

**The Emergency Department at Queen Alexandra Hospital in Portsmouth has recently been fitted with a combination of LAMILUX Fire Rated Glass Roofs, which are certified to REI 60, alongside LAMILUX Glass Roof PR60 rooflights.**



A total of seven mono-pitch rooflights have been installed, of which two feature fire-resistant glazing designed to provide fire protection capable of enduring flames for up to 60 minutes. The other five rooflights are fitted with double-glazed Easy Care Glass that includes a self-cleaning effect (Bioclean).

The aluminium profiles, on all rooflights, were pretreated with Filliform coating to safeguard them against corrosion, thereby enhancing the longevity of the rooflights, owing to their placement in the coastal area referred to as 'the great waterfront city.'



The largest fire-rated rooflight features a clear internal opening dimension of 1500mm in span and 6300mm in length, representing the maximum length permitted for REI60 certification. This rooflight is segmented into four glass panes to optimize the amount of daylight that can enter the building. The remaining four rooflights each have dimensions of 1500mm in span and 3500mm in length, and are divided into three glass panes.

